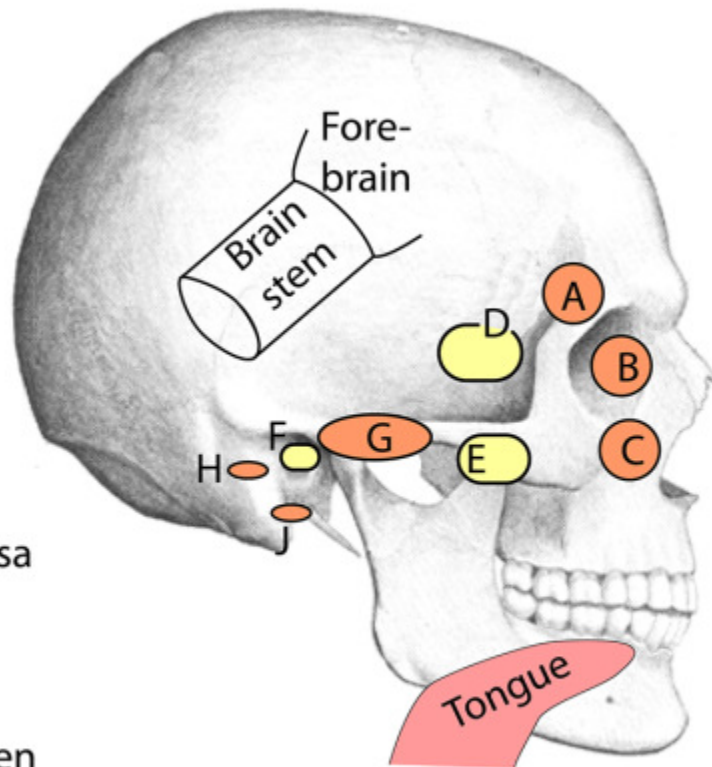


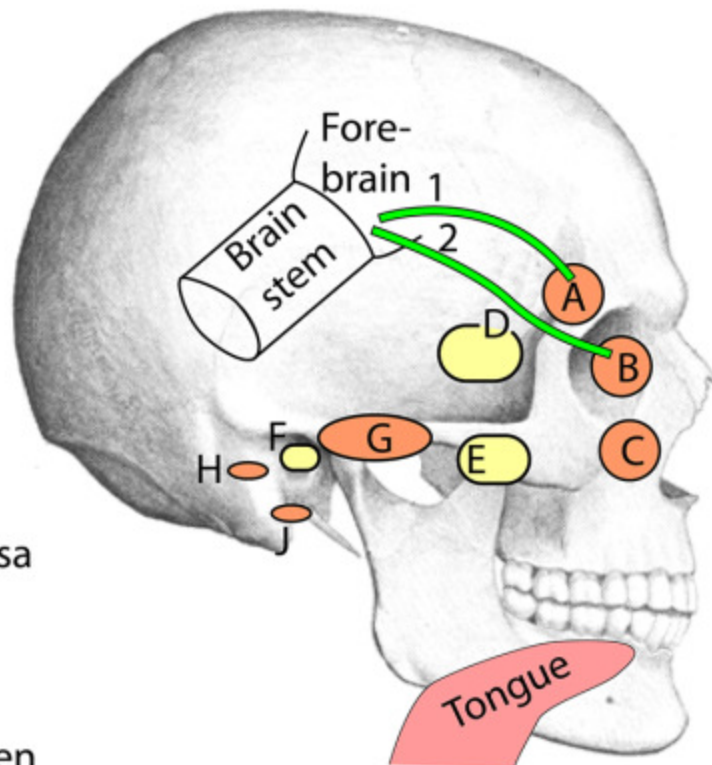
DESTINATION OF CRANIAL NERVES

- A= Nose
- B= Orbit
- C= Lower orbit
- D= Cavernous sinus
- E= Pterygopalatine fossa
- F= Middle ear
- G= Base of skull
- H= Hypoglossal canal
- J= Stylomastoid foramen



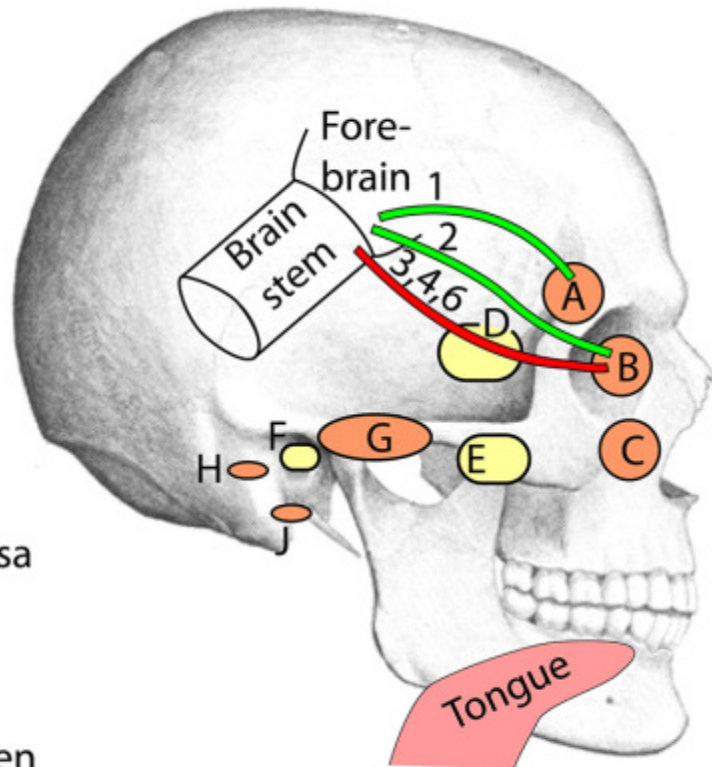
DESTINATION OF CRANIAL NERVES

- A= Nose
- B= Orbit
- C= Lower orbit
- D= Cavernous sinus
- E= Pterygopalatine fossa
- F= Middle ear
- G= Base of skull
- H= Hypoglossal canal
- J= Stylomastoid foramen



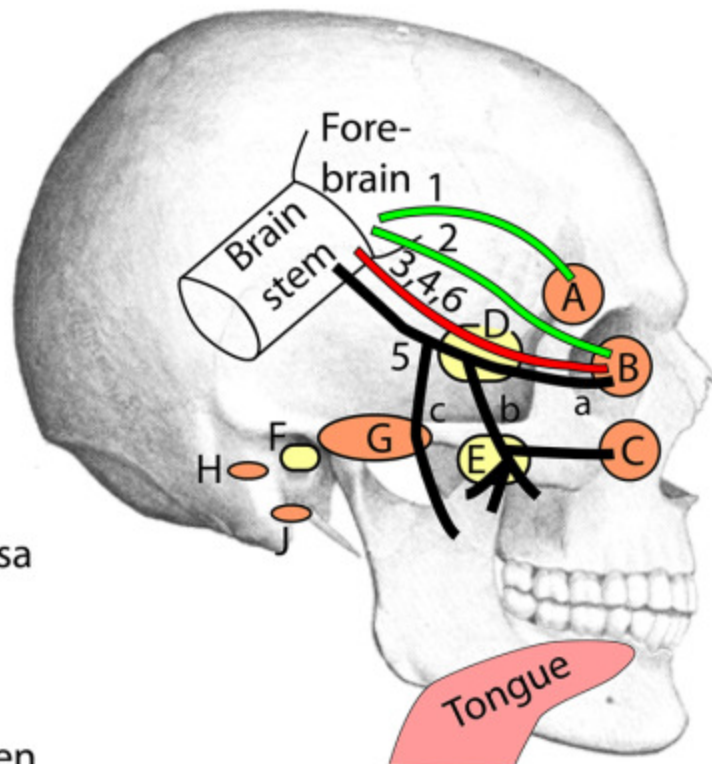
DESTINATION OF CRANIAL NERVES

- A= Nose
- B= Orbit
- C= Lower orbit
- D= Cavernous sinus
- E= Pterygopalatine fossa
- F= Middle ear
- G= Base of skull
- H= Hypoglossal canal
- J= Stylomastoid foramen



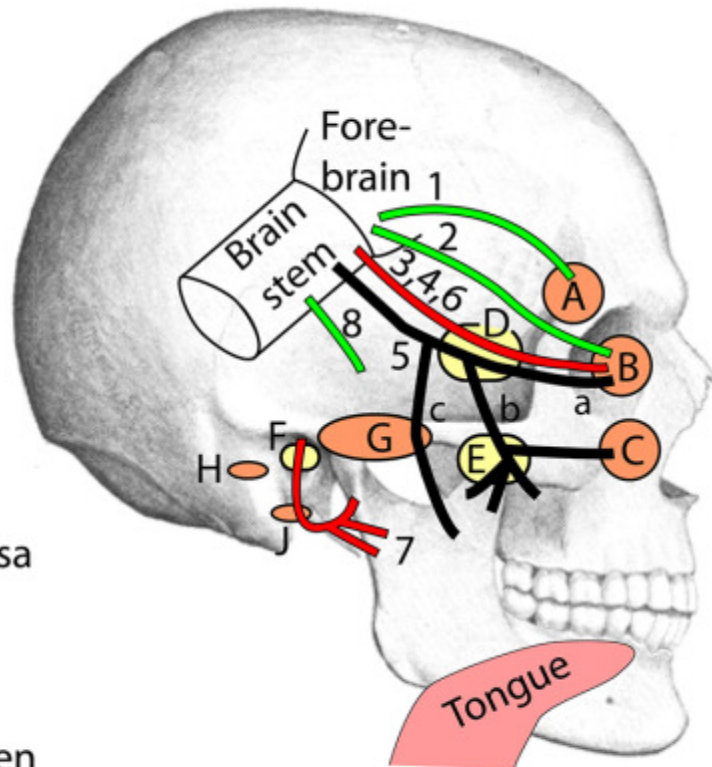
DESTINATION OF CRANIAL NERVES

- A= Nose
- B= Orbit
- C= Lower orbit
- D= Cavernous sinus
- E= Pterygopalatine fossa
- F= Middle ear
- G= Base of skull
- H= Hypoglossal canal
- J= Stylomastoid foramen



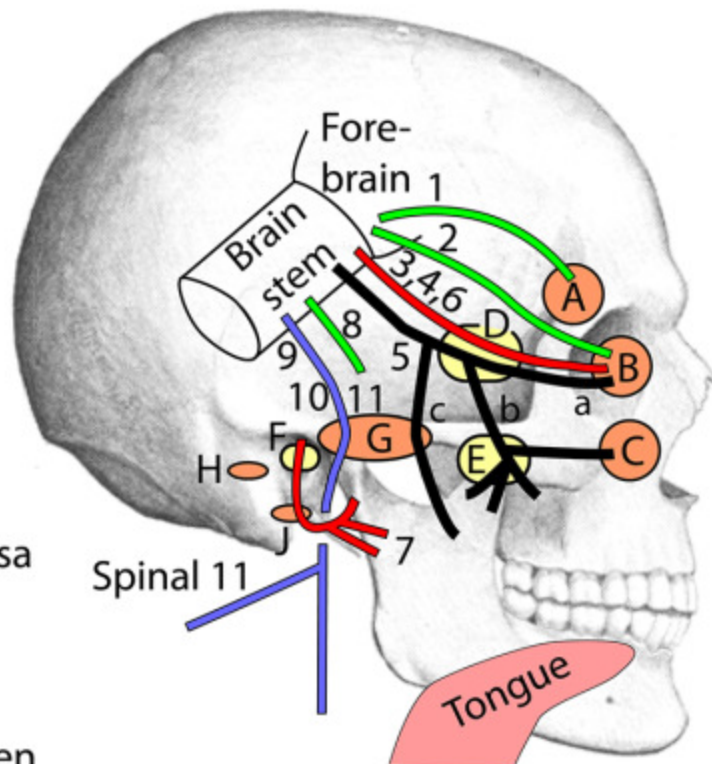
DESTINATION OF CRANIAL NERVES

- A= Nose
- B= Orbit
- C= Lower orbit
- D= Cavernous sinus
- E= Pterygopalatine fossa
- F= Middle ear
- G= Base of skull
- H= Hypoglossal canal
- J= Stylomastoid foramen



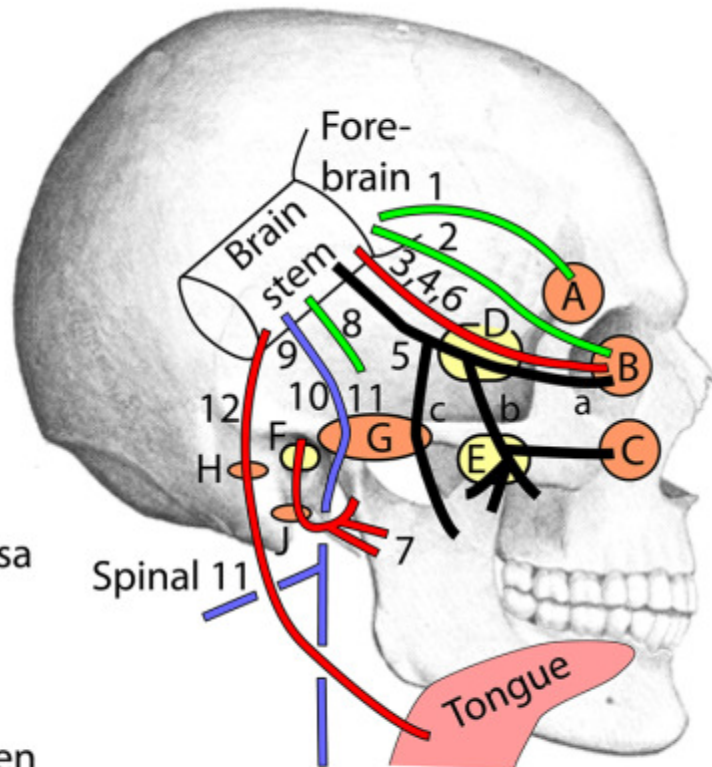
DESTINATION OF CRANIAL NERVES

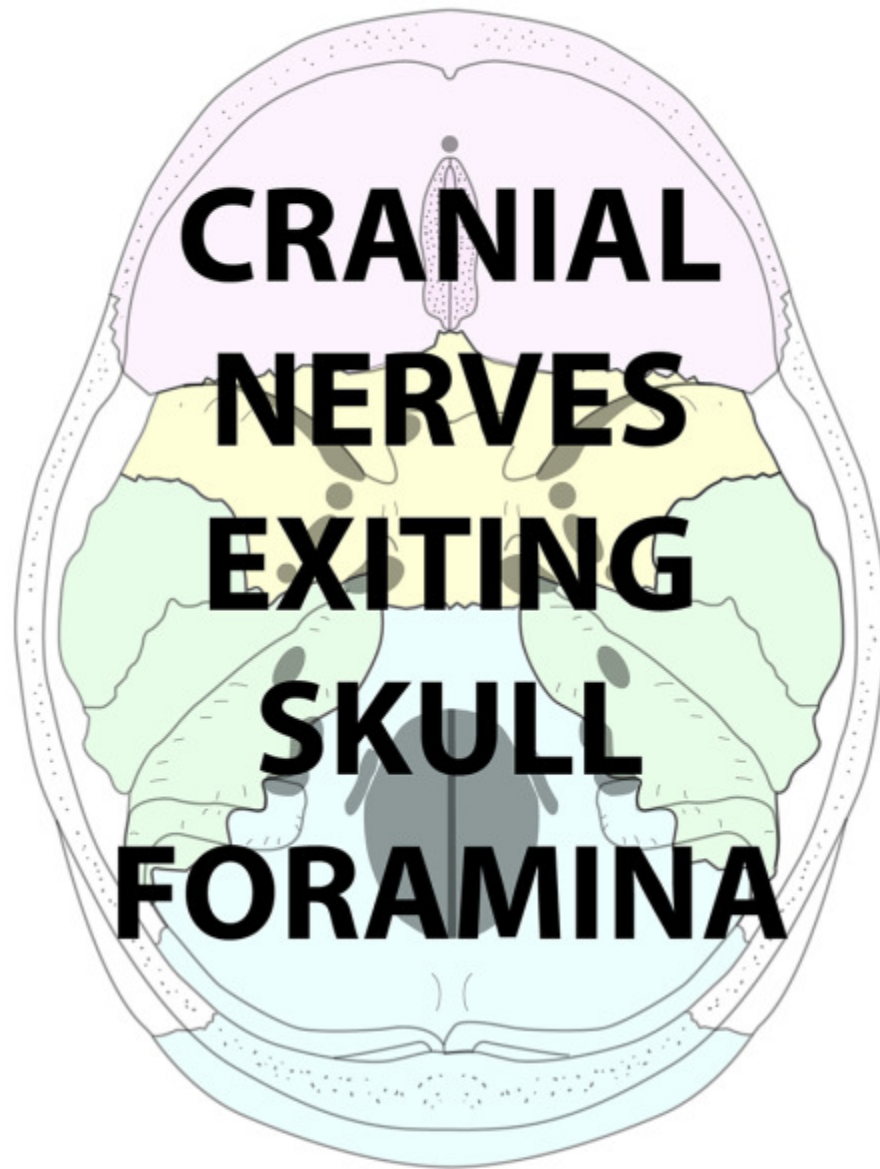
- A= Nose
- B= Orbit
- C= Lower orbit
- D= Cavernous sinus
- E= Pterygopalatine fossa
- F= Middle ear
- G= Base of skull
- H= Hypoglossal canal
- J= Stylomastoid foramen



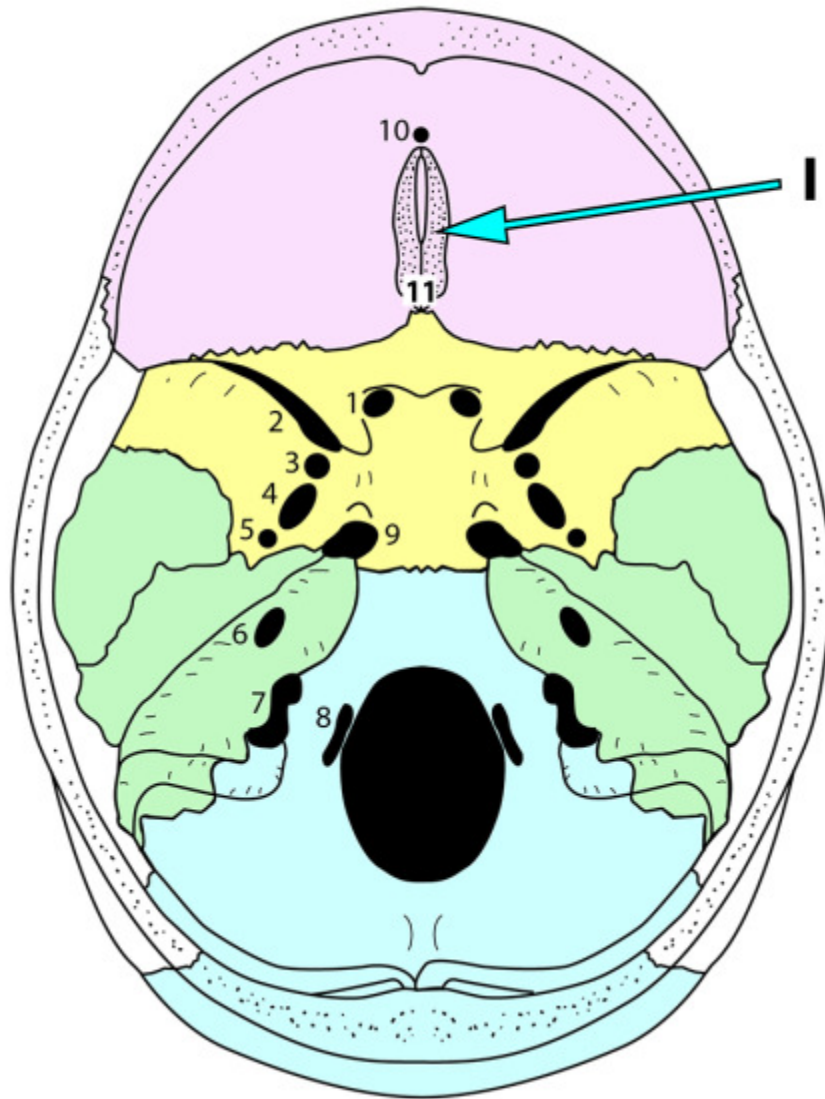
DESTINATION OF CRANIAL NERVES

- A= Nose
- B= Orbit
- C= Lower orbit
- D= Cavernous sinus
- E= Pterygopalatine fossa
- F= Middle ear
- G= Base of skull
- H= Hypoglossal canal
- J= Stylomastoid foramen

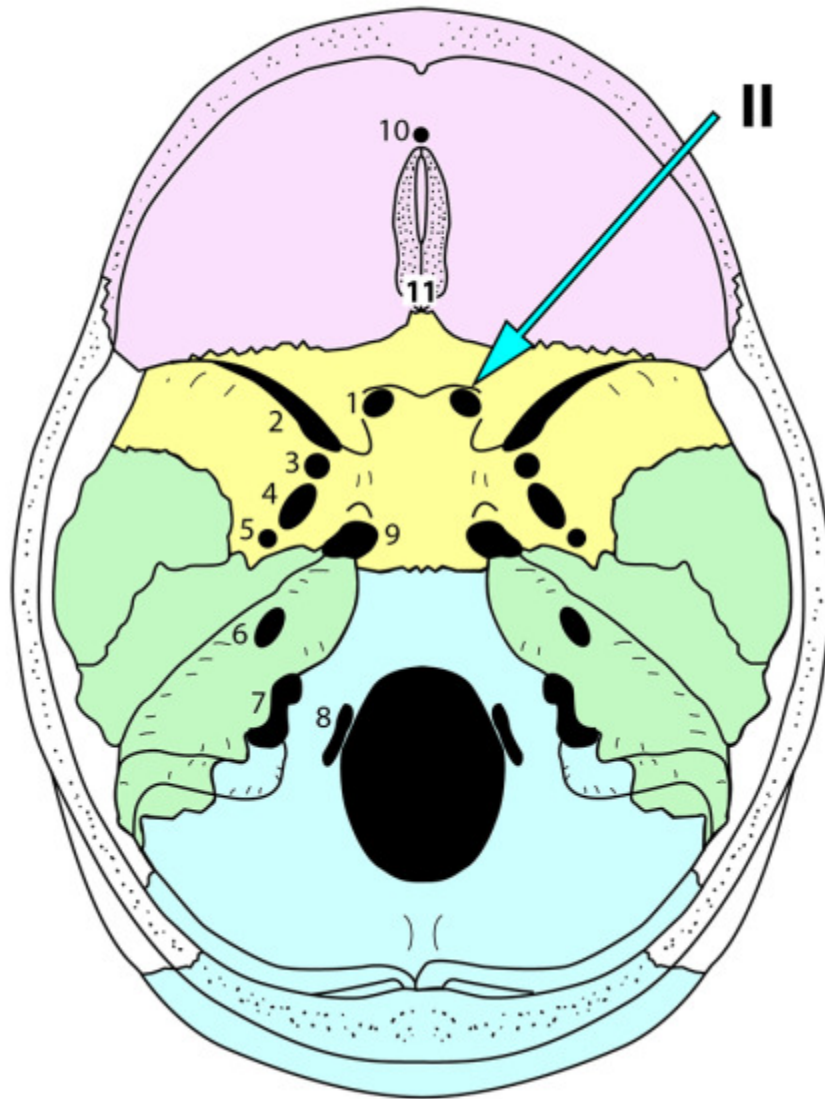




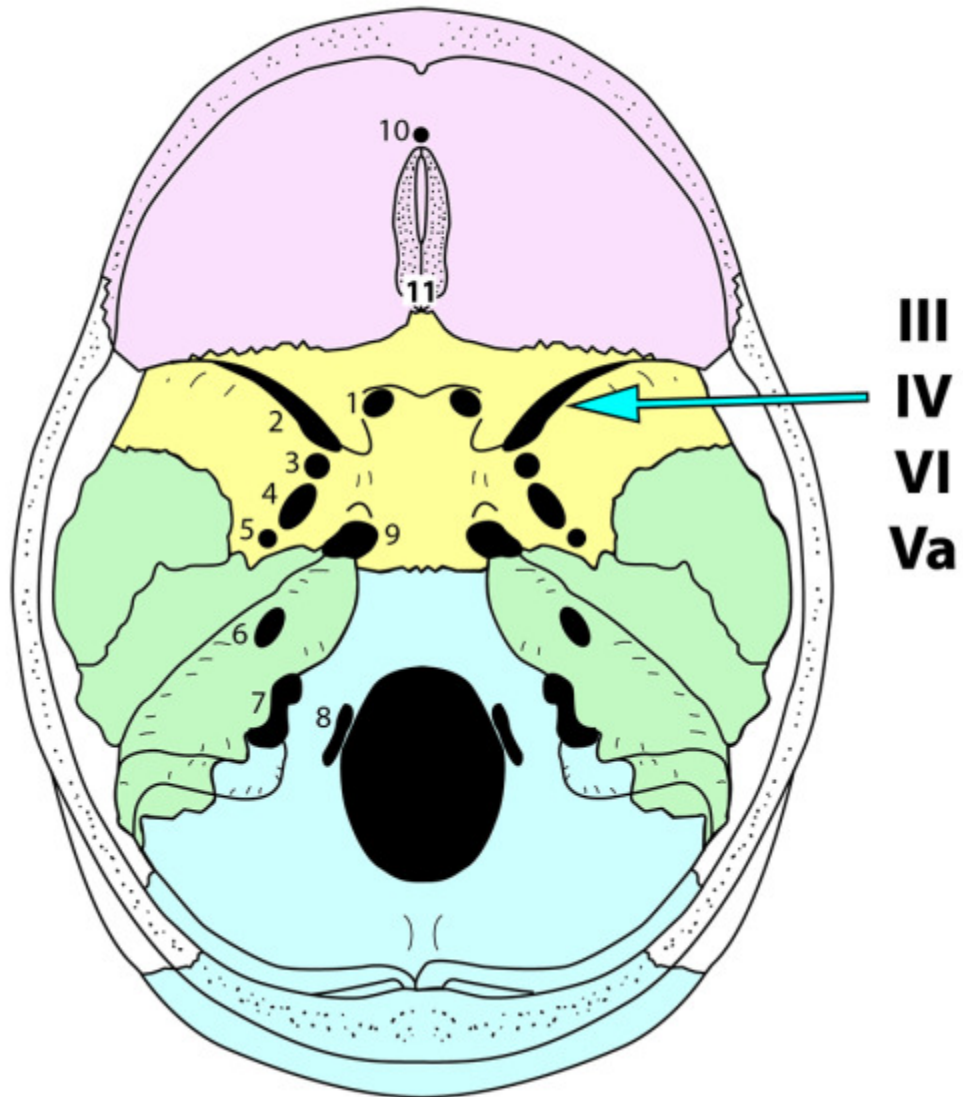
**CRANIAL
NERVES
EXITING
SKULL
FORAMINA**



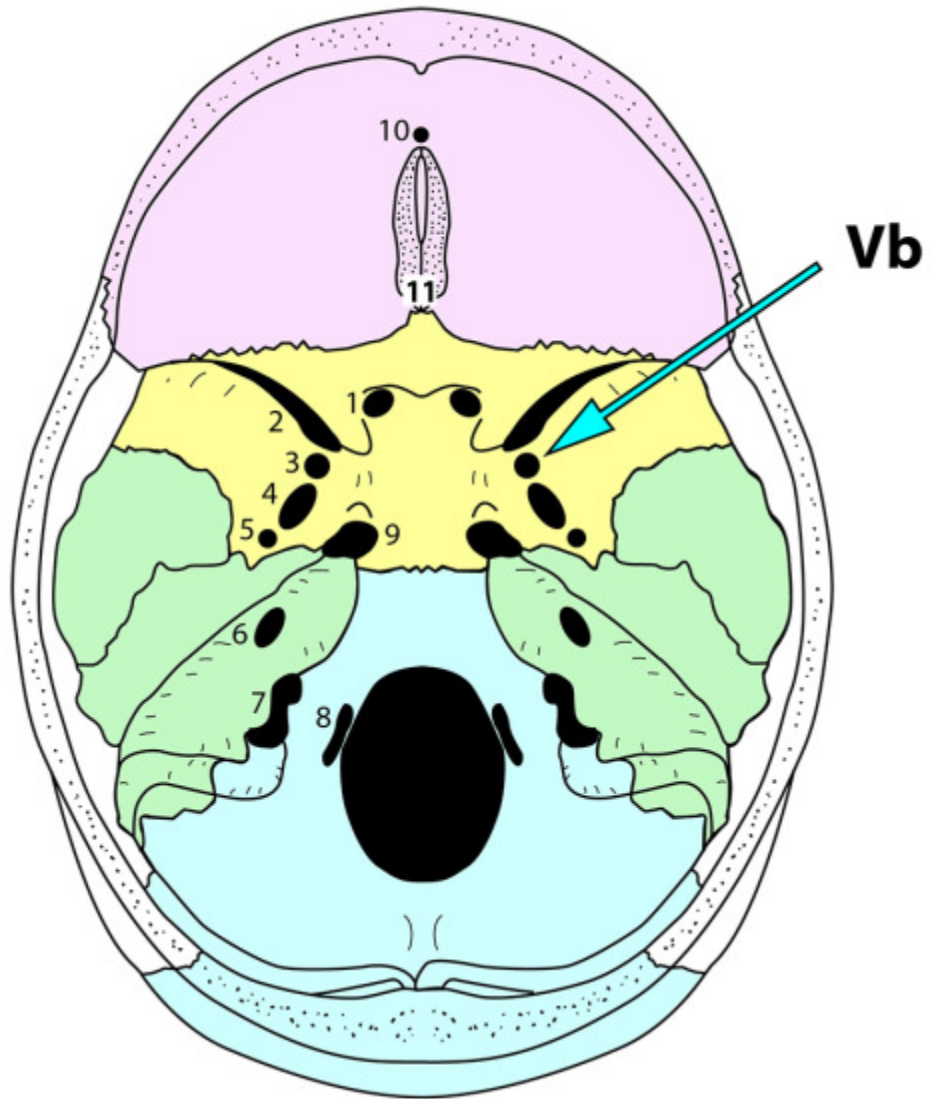
**Cribriform plate of ethmoid:
Olfactory nerve (I)**



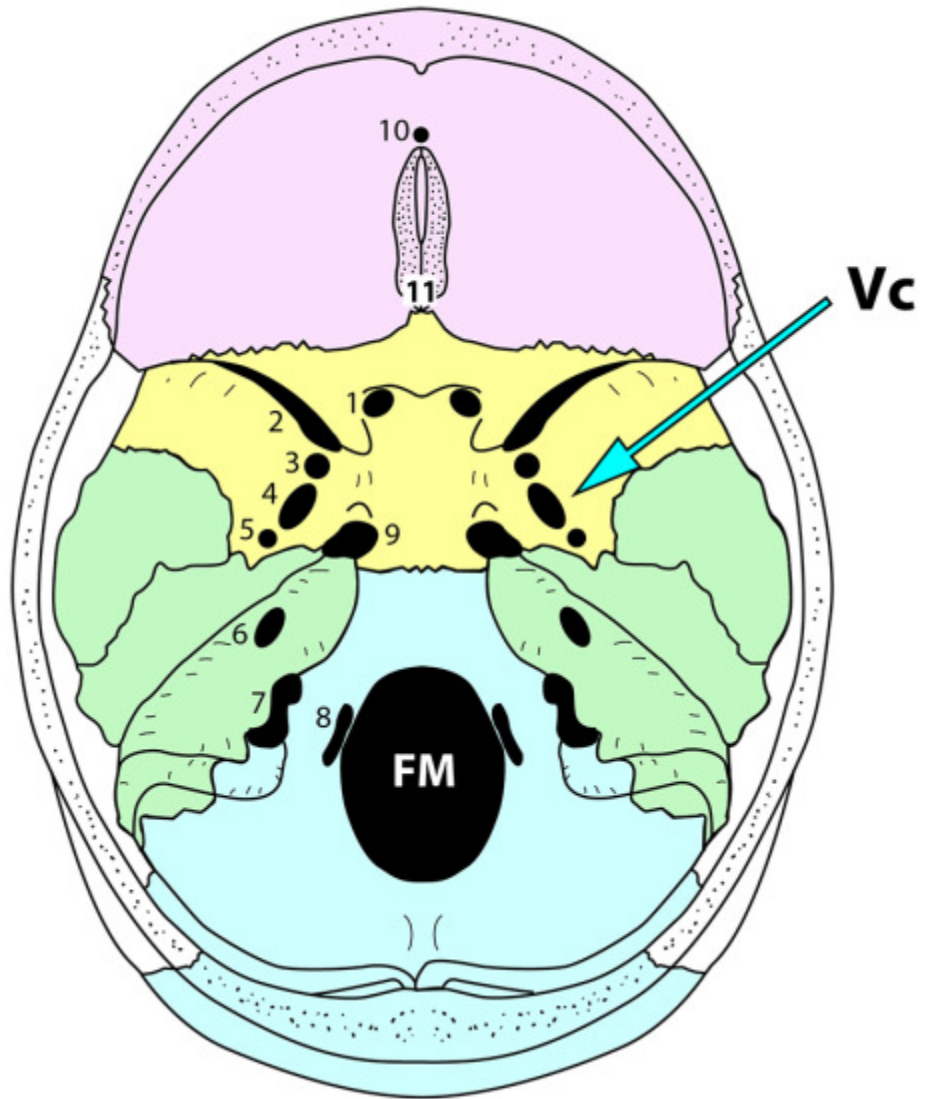
**Optic canal:
Optic Nerve**



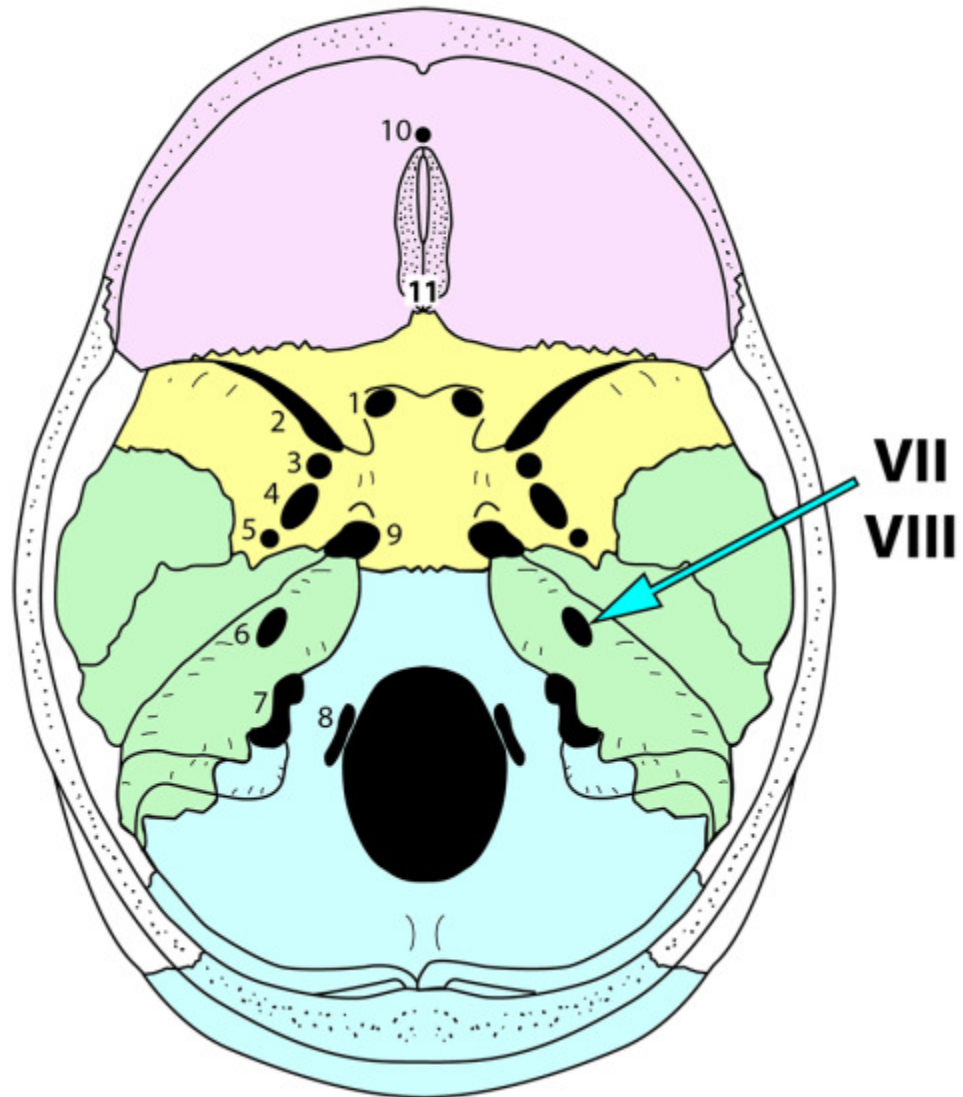
Superior orbital fissure:
Oculomotor (III)
Trochlear (IV)
Abducent (VI)
Ophthalmic division of Trigeminal (Va)



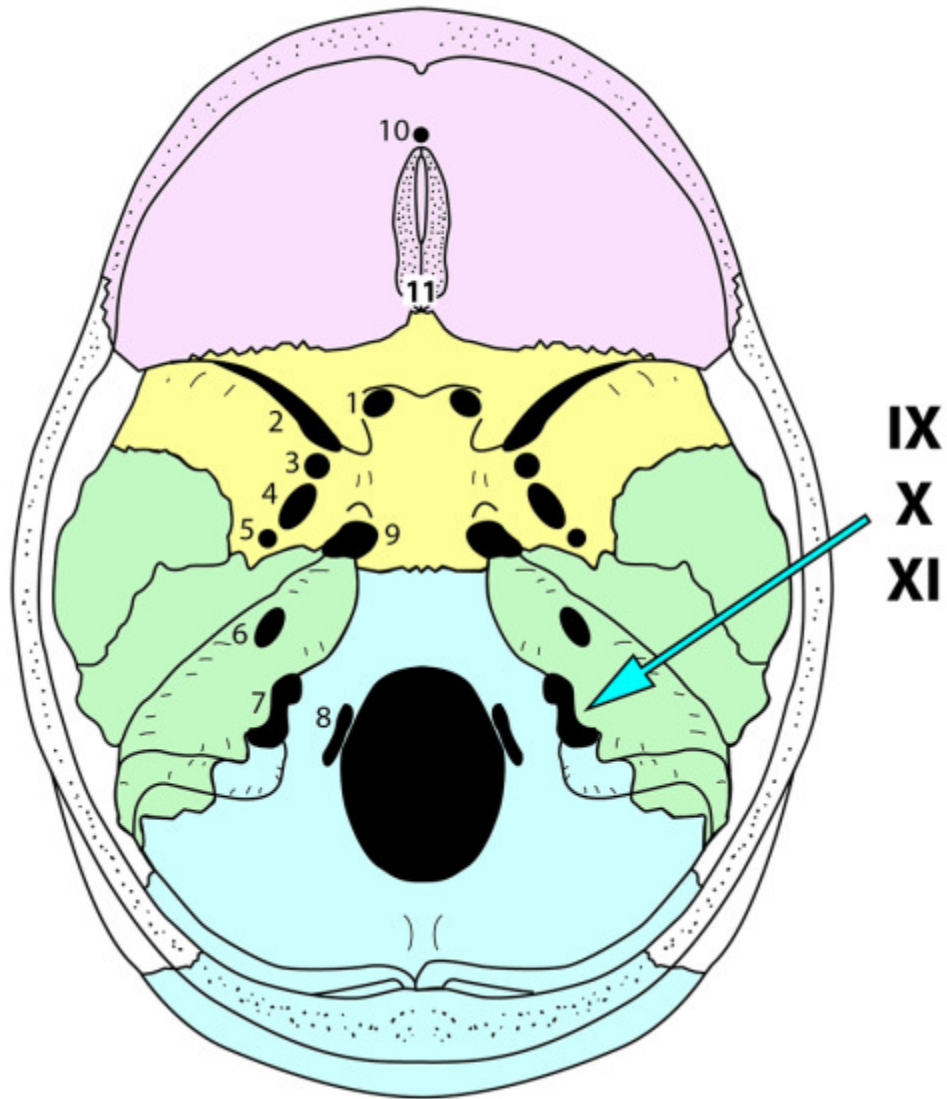
**Foramen rotundum:
Maxillary division of trigeminal nerve (Vb)**



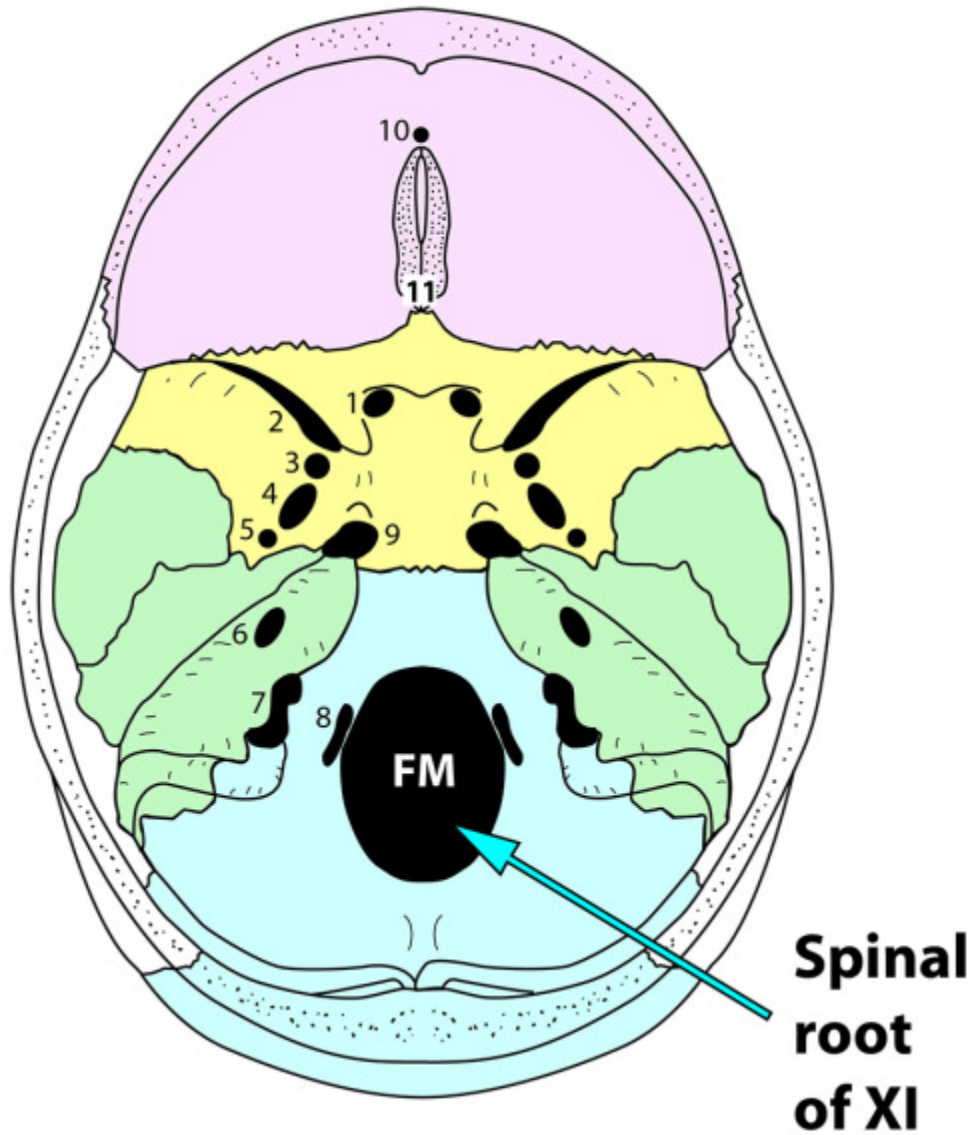
**Foramen ovale:
Mandibular division of trigeminal (Vc)**



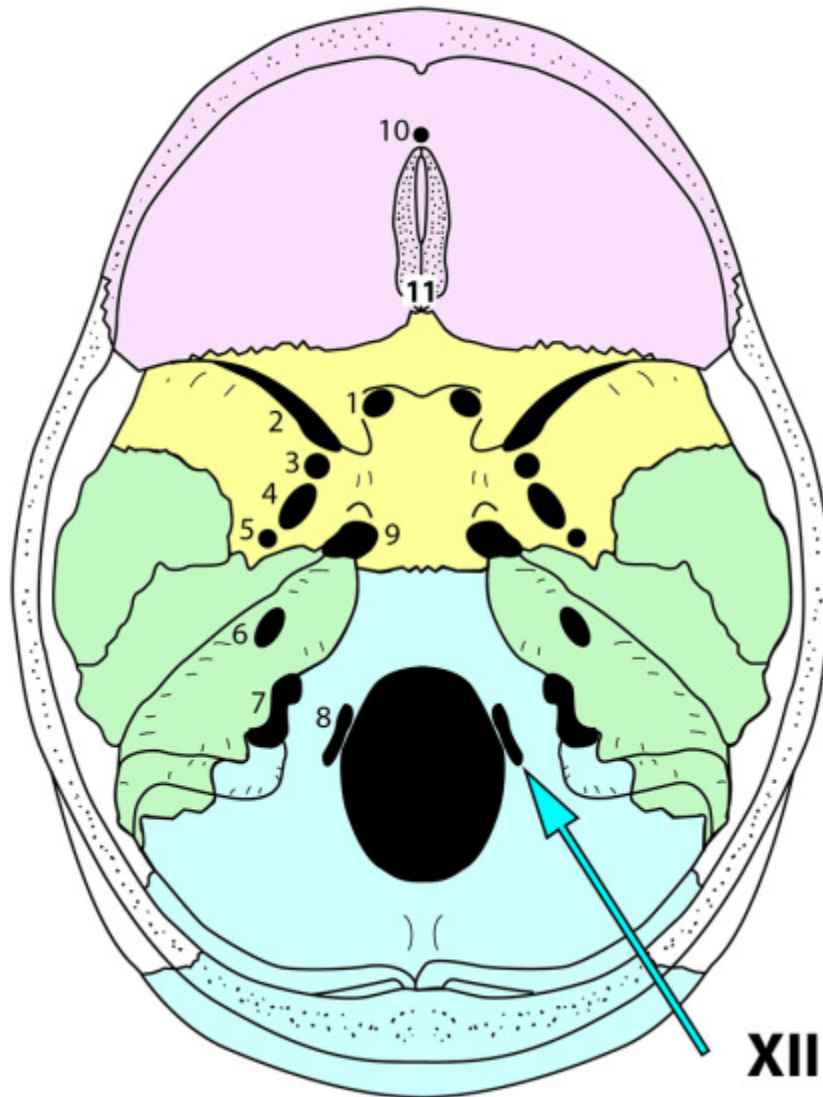
Internal acoustic (auditory) meatus:
Facial Nerve (VII)
Vestibulocochlear Nerve (VIII)



**Jugular foramen:
Glossopharyngeal nerve (IX)
Vagus nerve (X)
Accessory nerve (XI)**



**Foramen magnum:
Spinal root of accessory nerve (XI)**



**Hypoglossal canal:
Hypoglossal nerve (XII)**