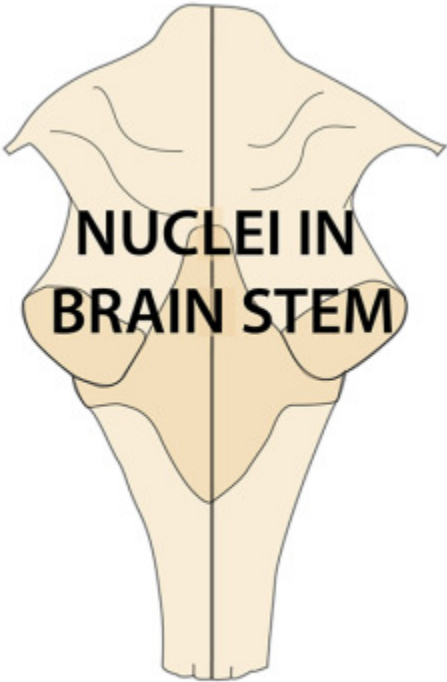
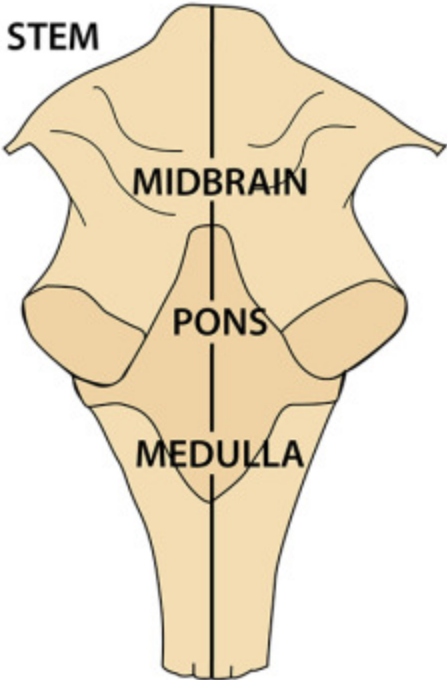


Cranial Nerve Brain Stem Nuclei and Exit Sites from Brain



NUCLEI IN BRAIN STEM

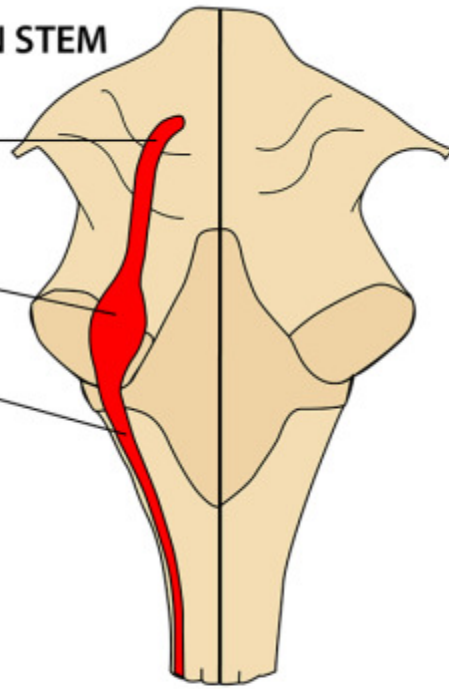


NUCLEI IN BRAIN STEM

Trigeminal (V)
mesencephalic
(proprioception)

Trigeminal (V)
chief (touch)

Trigeminal (V)
spinal (pain &
temperature)



Somatic
Taste &
baroreceptors
Hearing/balance



SENSORY

MOTOR

Somatic
Parasympathetic
Branchiomotor

NUCLEI IN BRAIN STEM

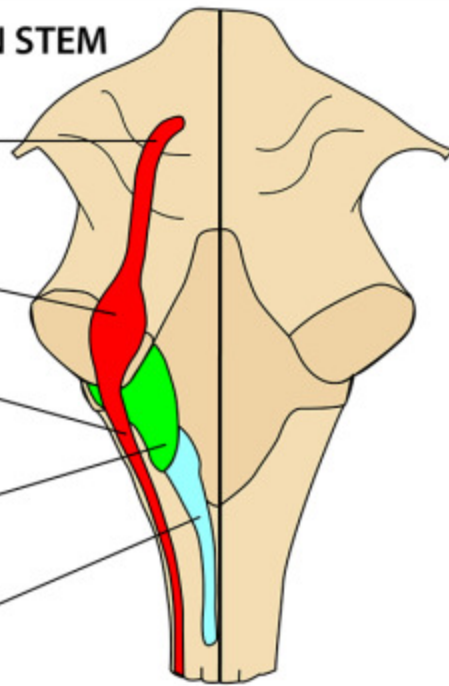
Trigeminal (V)
mesencephalic
(proprioception)

Trigeminal (V)
chief (touch)

Trigeminal (V)
spinal (pain &
temperature)

Vestibular &
cochlear (VIII)

Nucleus (tractus)
solitarius



Somatic
Taste &
baroreceptors
Hearing/balance



SENSORY

MOTOR

Somatic
Parasympathetic
Branchiomotor

NUCLEI IN BRAIN STEM

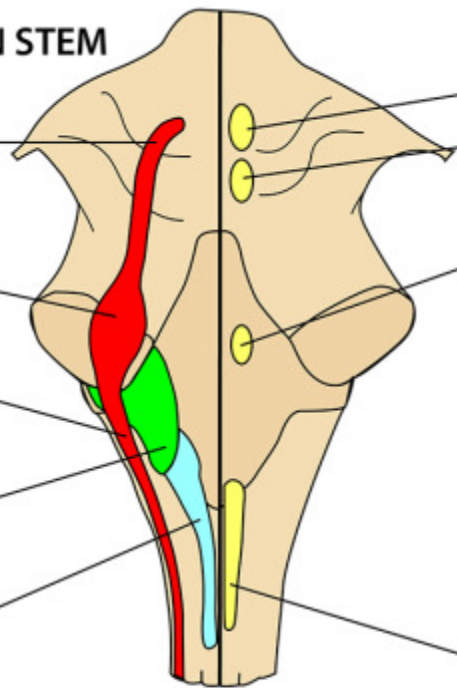
Trigeminal (V)
mesencephalic
(proprioception)

Trigeminal (V)
chief (touch)

Trigeminal (V)
spinal (pain &
temperature)

Vestibular &
cochlear (VIII)

Nucleus (tractus)
solitarius



Oculomotor (III)

Trochlear (IV)

Abducent (VI)

Hypoglossal (XII)

Somatic
Taste &
baroreceptors
Hearing/balance



SENSORY

MOTOR

Somatic
Parasympathetic
Branchiomotor

NUCLEI IN BRAIN STEM

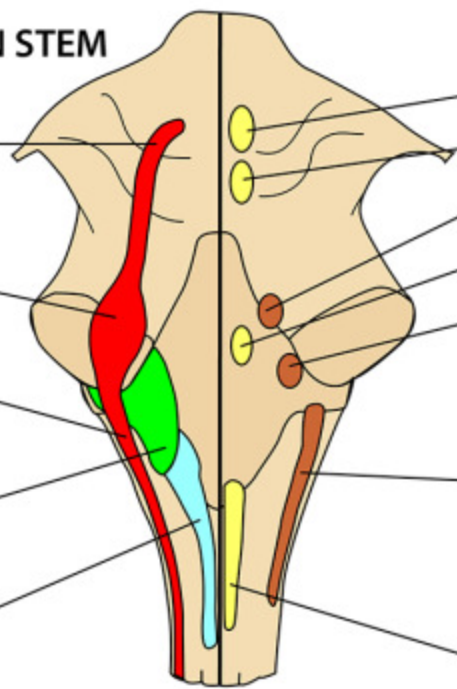
Trigeminal (V)
mesencephalic
(proprioception)

Trigeminal (V)
chief (touch)

Trigeminal (V)
spinal (pain &
temperature)

Vestibular &
cochlear (VIII)

Nucleus (tractus)
solitarius



Oculomotor (III)

Trochlear (IV)

Trigeminal motor (Vc)

Abducent (VI)

Facial (VII)

Nucleus ambiguus
(branchiomotor)

Hypoglossal (XII)

Somatic
Taste &
baroreceptors
Hearing/balance



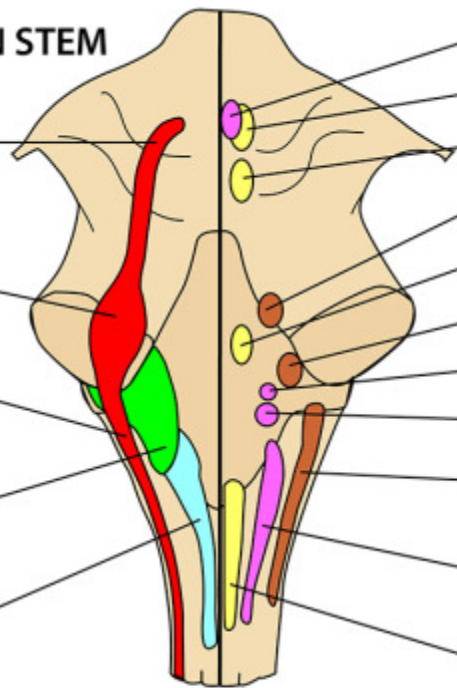
SENSORY

MOTOR

Somatic
Parasympathetic
Branchiomotor

NUCLEI IN BRAIN STEM

- Trigeminal (V) mesencephalic (proprioception)
- Trigeminal (V) chief (touch)
- Trigeminal (V) spinal (pain & temperature)
- Vestibular & cochlear (VIII)
- Nucleus (tractus) solitarius



- Edinger-Westphal
- Oculomotor (III)
- Trochlear (IV)
- Trigeminal motor (Vc)
- Abducent (VI)
- Facial (VII)
- Superior salivary
- Inferior salivary
- Nucleus ambiguus (branchiomotor)
- Dorsal motor of vagus (X)
- Hypoglossal (XII)

- Somatic
- Taste & baroreceptors
- Hearing/balance

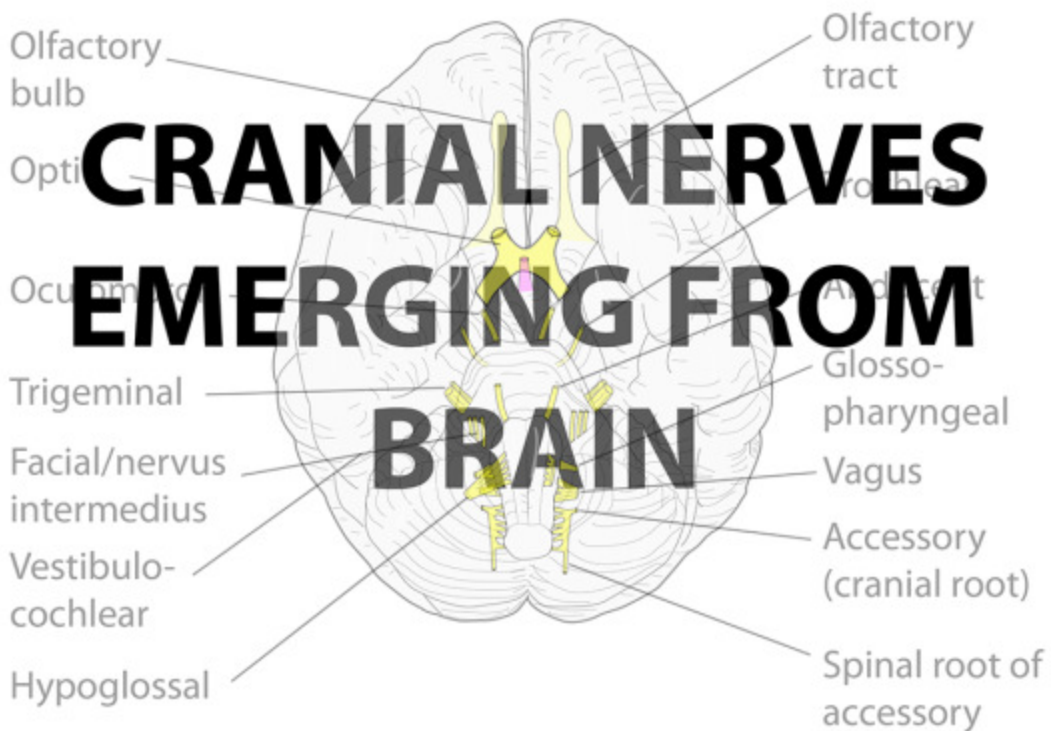


SENSORY

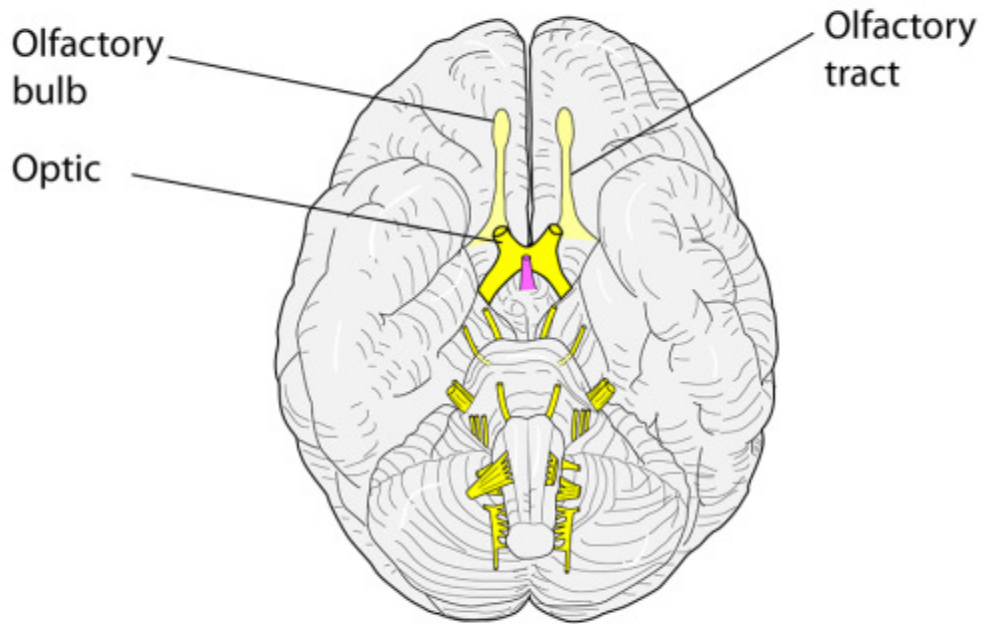
MOTOR

- Yellow square: Somatic
- Magenta square: Parasympathetic
- Brown square: Branchiomotor

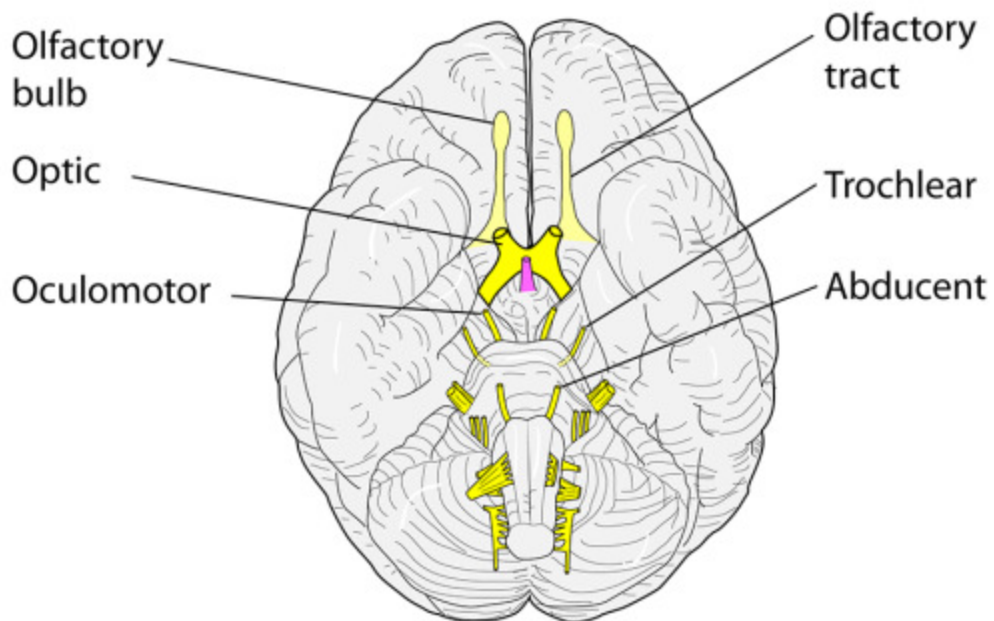
CRANIAL NERVES LEAVING THE BRAIN



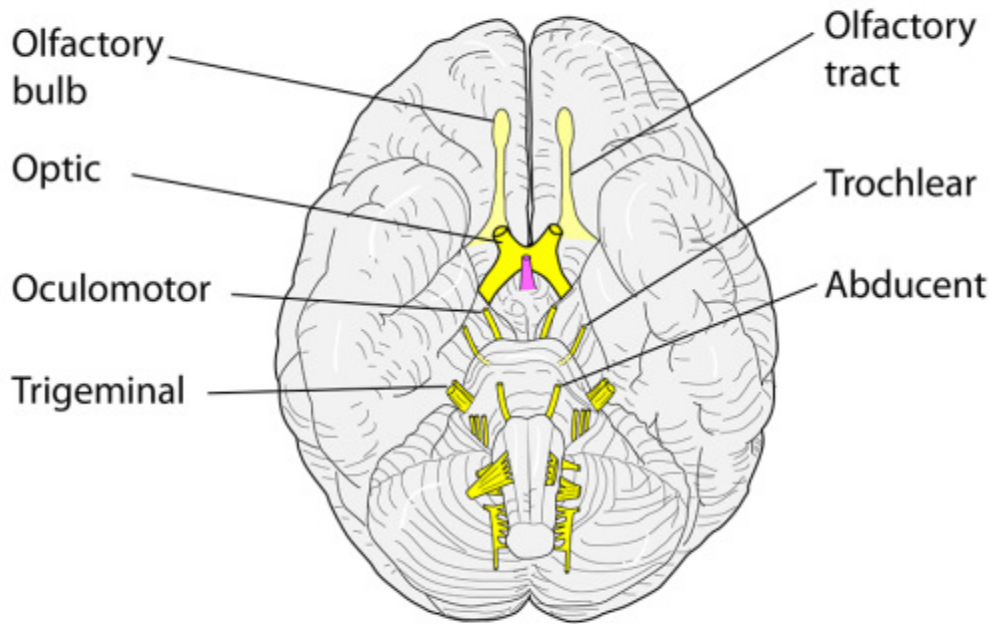
CRANIAL NERVES LEAVING THE BRAIN



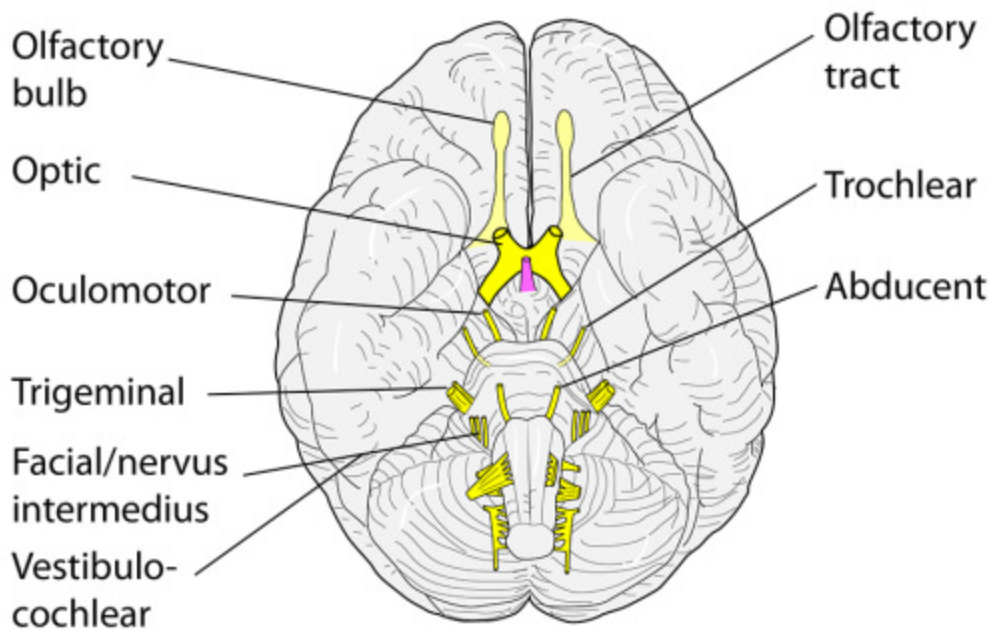
CRANIAL NERVES LEAVING THE BRAIN



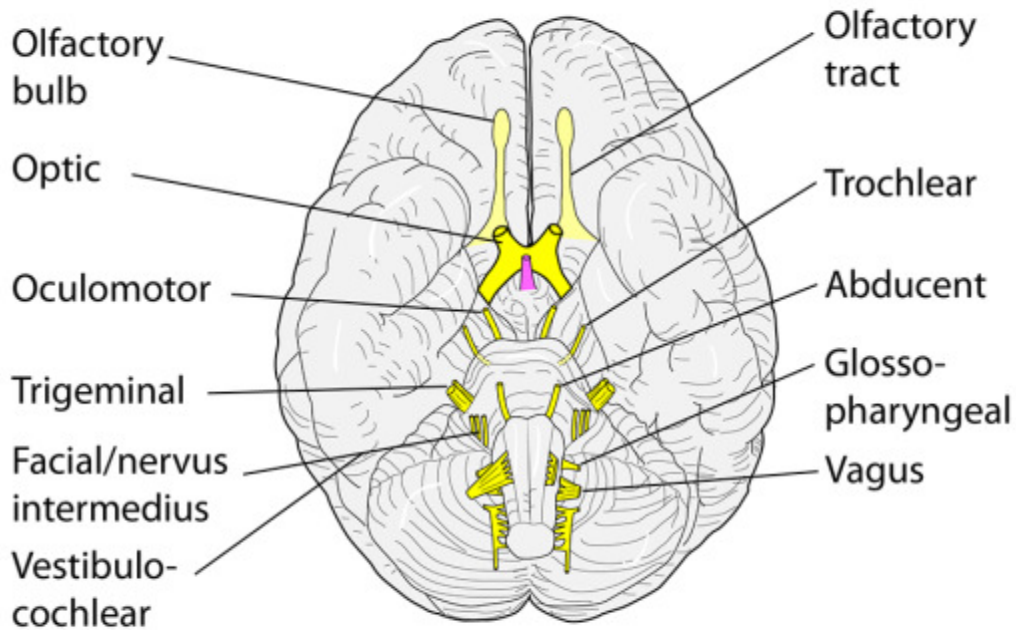
CRANIAL NERVES LEAVING THE BRAIN



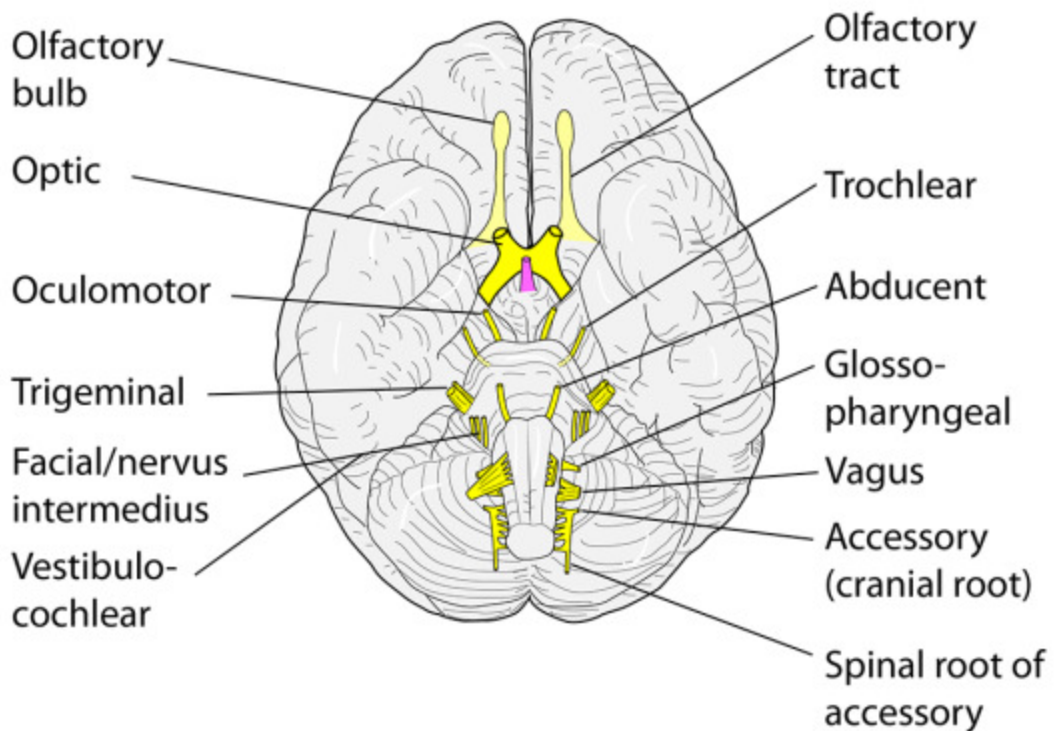
CRANIAL NERVES LEAVING THE BRAIN



CRANIAL NERVES LEAVING THE BRAIN



CRANIAL NERVES LEAVING THE BRAIN



CRANIAL NERVES LEAVING THE BRAIN

