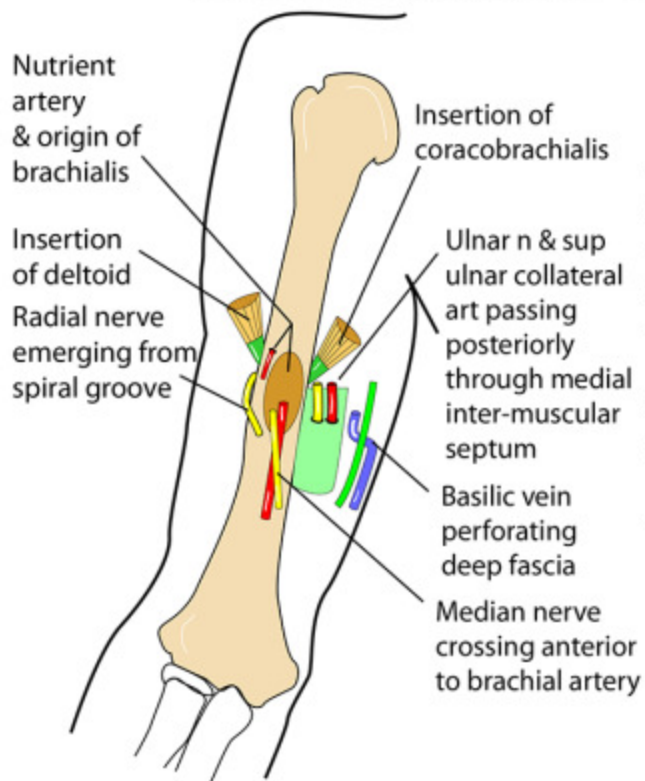


Events Occurring at Mid-Humerus

EVENTS OCCURING AT OR NEAR MID-HUMERUS



- Nutrient artery entering humerus
- Origin of brachialis
- Insertion of deltoid
- Insertion of coracobrachialis
- Radial nerve emerging from spiral groove
- Basilic vein perforating deep fascia
- Median nerve crossing anterior to brachial artery
- Ulnar nerve & superior ulnar collateral artery passing posteriorly through medial inter-muscular septum