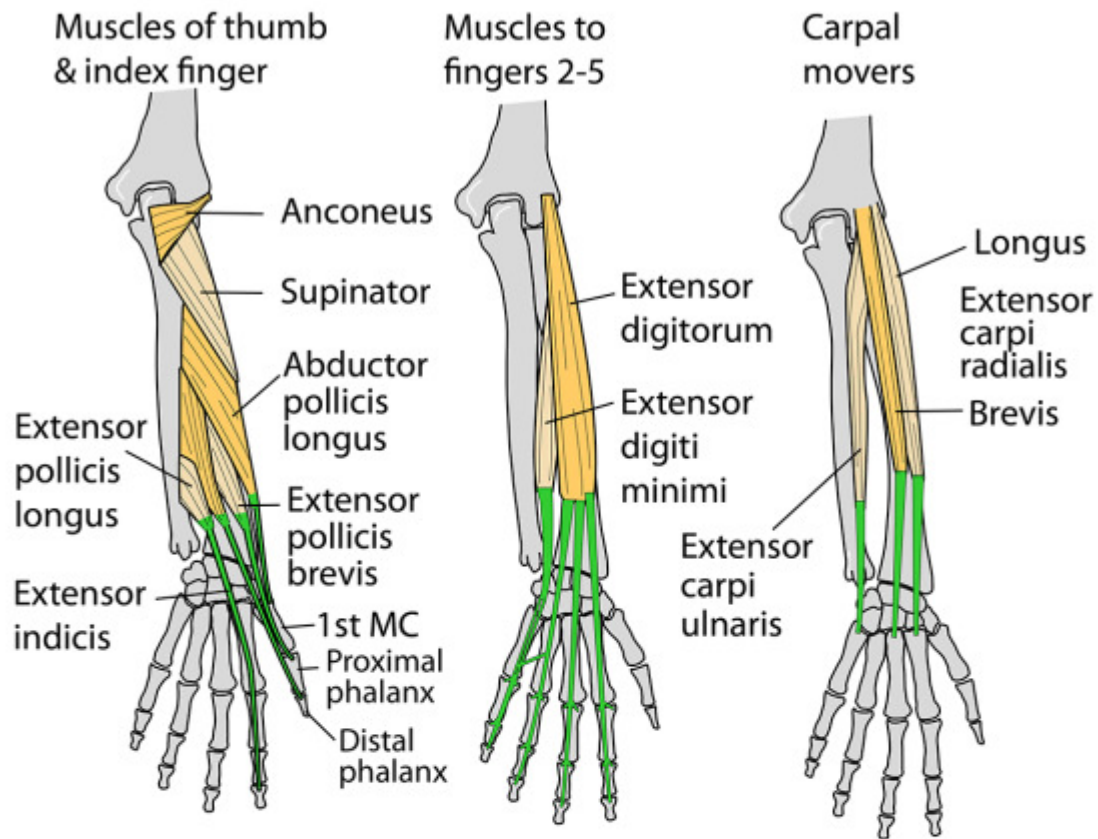


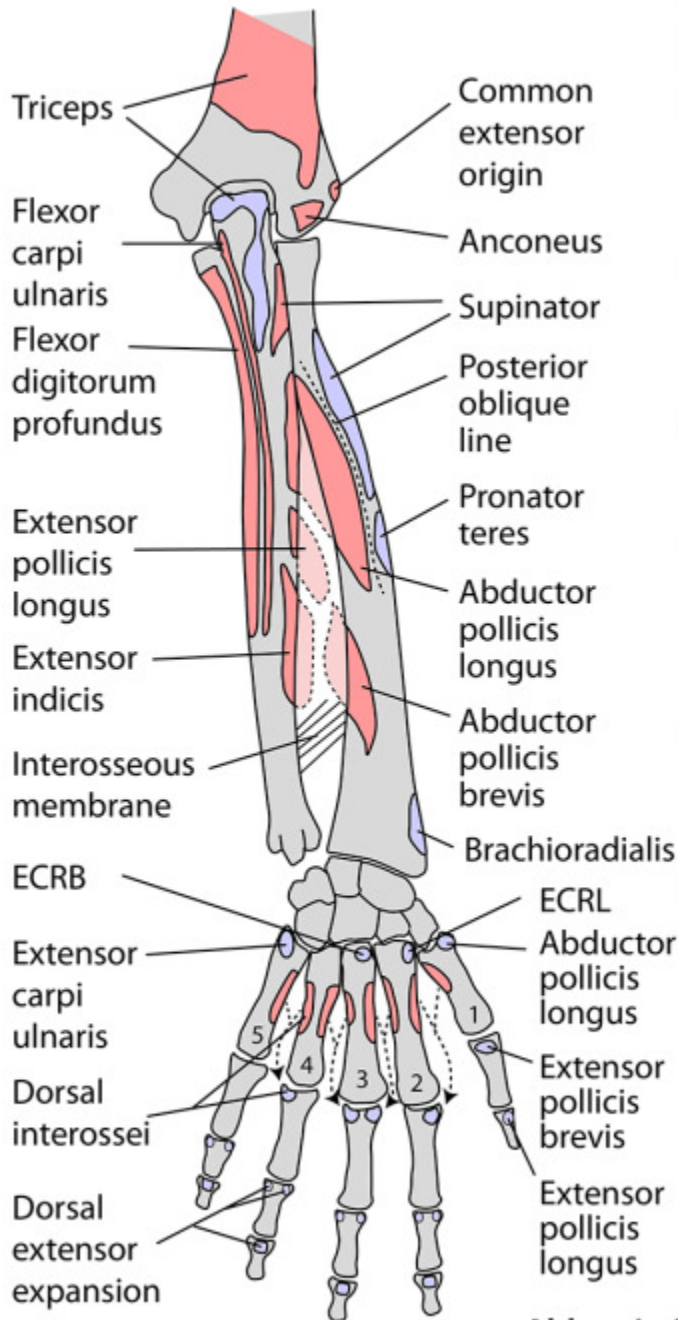
MUSCLES OF POSTERIOR FOREARM



Rules:

1. Long extensors attach to the base of proximal phalanx whilst long flexors do not. On the flexor side it is the interossei and lumbricals that attach here and this accounts for clawed hand when these small muscles fail.
2. All 4 deep muscles (see left hand drawing) all go to the index finger and thumb in a ratio of 1:3. The 3 muscles to the thumb attach in turn to 1st metacarpal (AbPL), the proximal phalanx (EPB) and the distal phalanx (EPL).
3. Of the 4 fingers (excluding the thumb), two fingers have an extra tendon over and above that from extensor digitorum. These are the index and little finger in the form of extensor indicis and extensor digiti minimi.

POSTERIOR FOREARM & HAND MUSCLE ATTACHMENTS



2nd metacarpal is longest
Middle finger is longest

Forearm extensors are divided into these groups:

Carpal movers:

- Extensor carpi ulnaris
- Extensor carpi radialis longus
- Extensor carpi radialis brevis

Finger movers:

- Extensor digitorum
- Extensor indicis
- Extensor digiti minimi

Thumb movers:

3 muscles/tendons of the snuff box

Thus the only fingers with an extra tendon, in addition to extensor digitorum, are index and little

All 4 muscles arising deep in the forearm go to thumb (3: EPL, APL, EPB) and index finger (1: Extensor indicis)

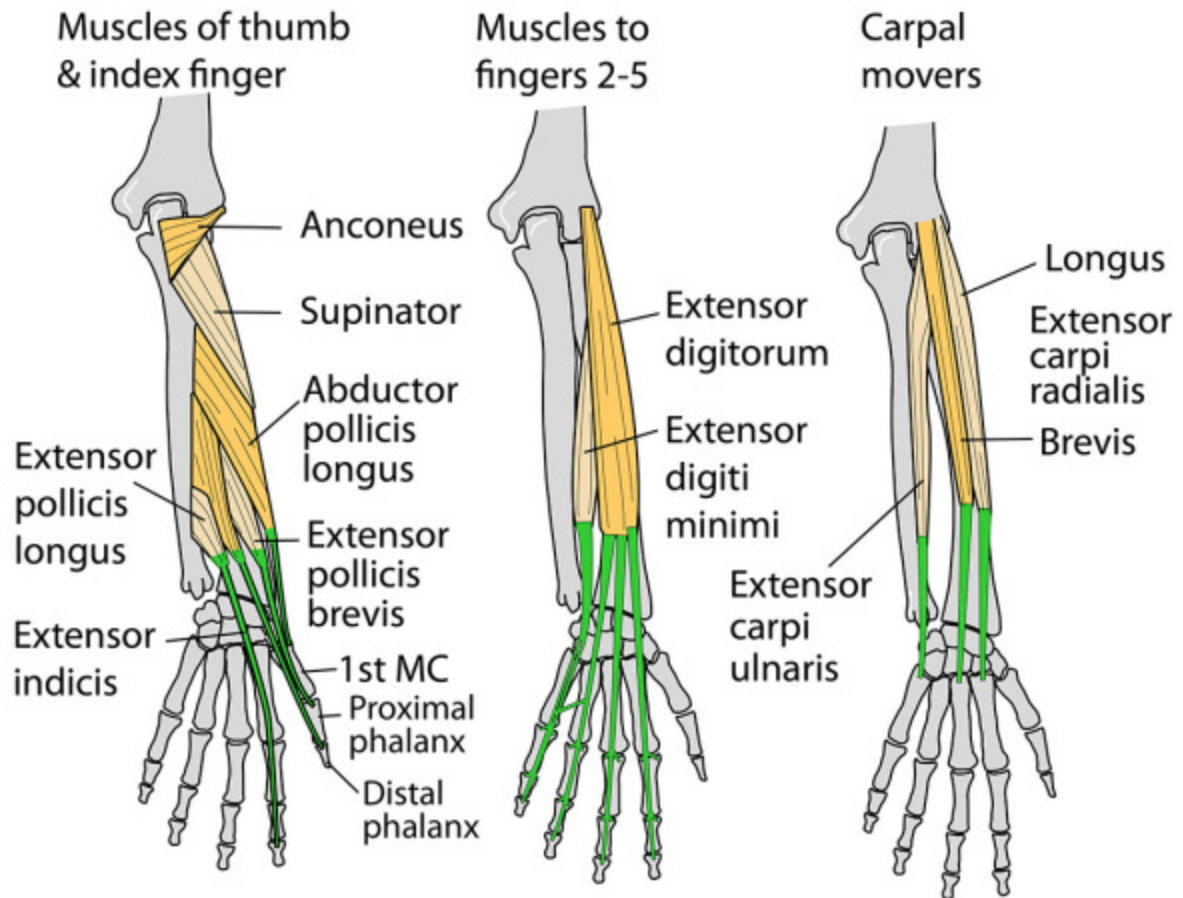
Note that muscles arising from the lateral epicondyle arise from its ANTERIOR and not its posterior surface

For details of attachments & action, see muscle section in the book - Instant Anatomy, by R H Whitaker & N R Borley. 4th edition. Wiley-Blackwell 2010

Abbreviations:

- ECRB- Extensor carpi radialis brevis
- ECRL- Extensor carpi radialis longus

MUSCLES OF POSTERIOR FOREARM



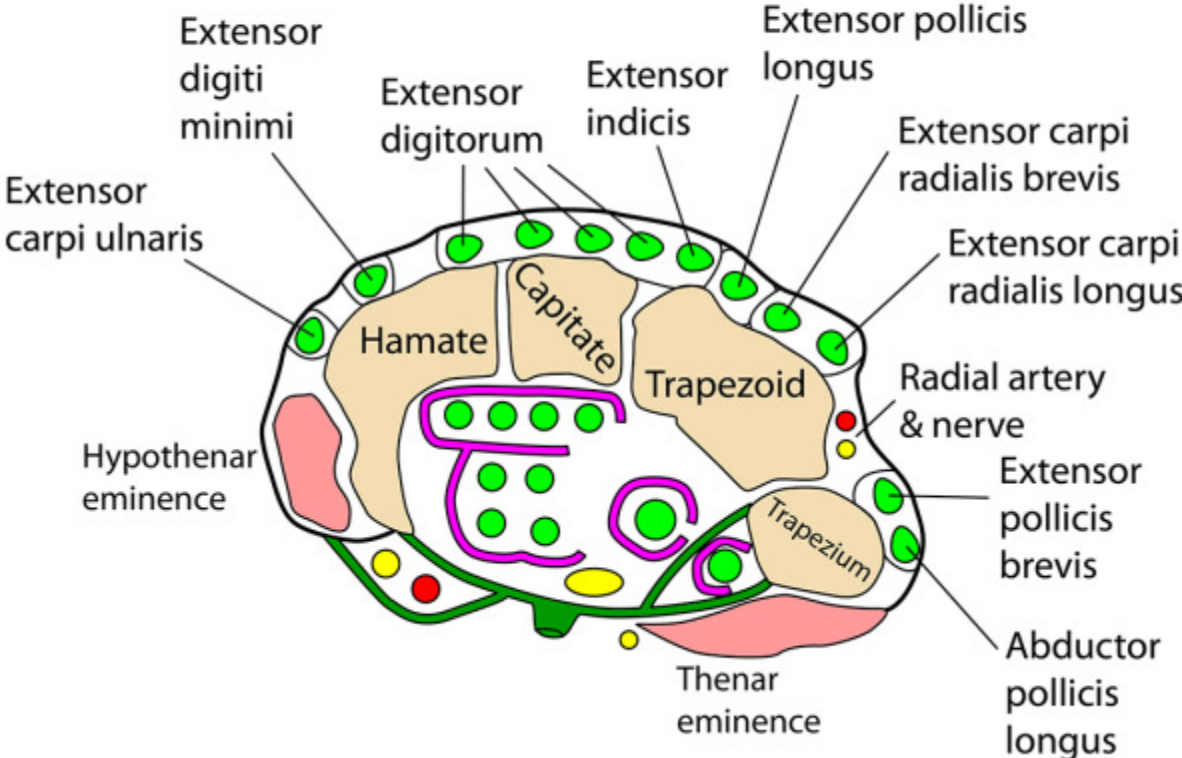
Rules:

1. Long extensors attach to the base of proximal phalanx whilst long flexors do not. On the flexor side it is the interossei and lumbricals that attach here and this accounts for clawed hand when these small muscles fail.
2. All 4 deep muscles (see left hand drawing) all go to the index finger and thumb in a ratio of 1:3. The 3 muscles to the thumb attach in turn to 1st metacarpal (AbPL), the proximal phalanx (EPB) and the distal phalanx (EPL).
3. Of the 4 fingers (excluding the thumb), two fingers have an extra tendon over and above that from extensor digitorum. These are the index and little finger in the form of extensor indicis and extensor digiti minimi.

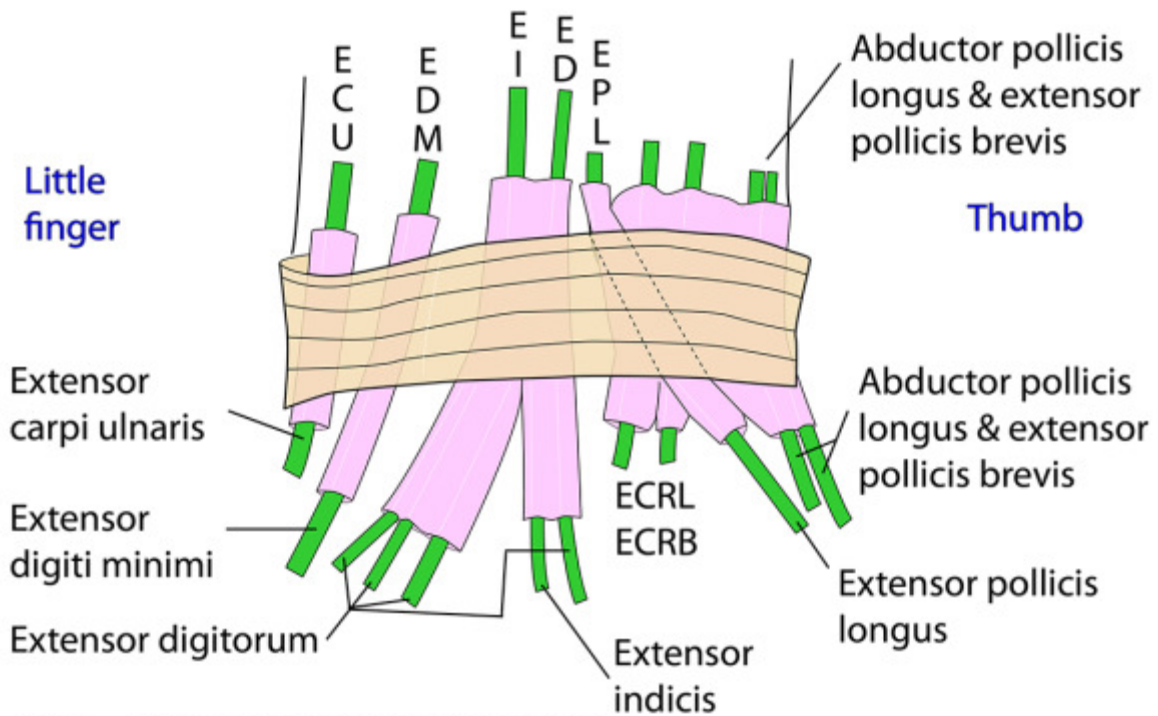
EXTENSOR TENDON COMPARTMENTS JUST BEYOND THE LEFT EXTENSOR RETINACULUM

LITTLE FINGER

THUMB

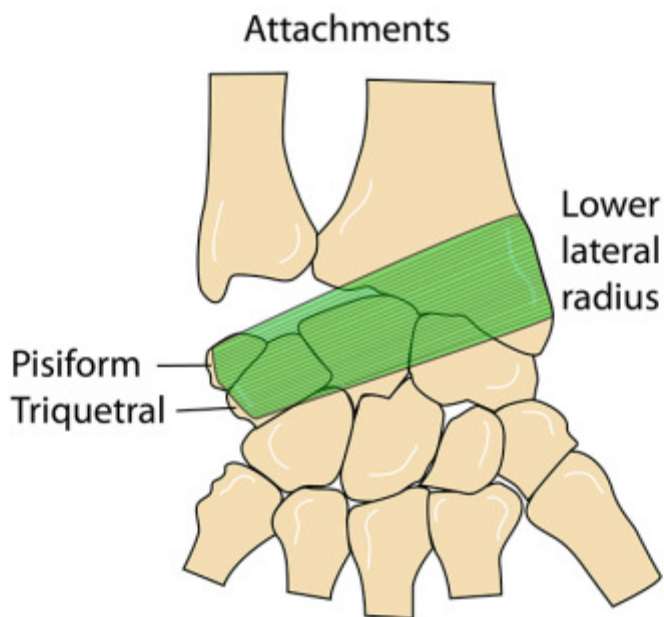


RIGHT EXTENSOR RETINACULUM

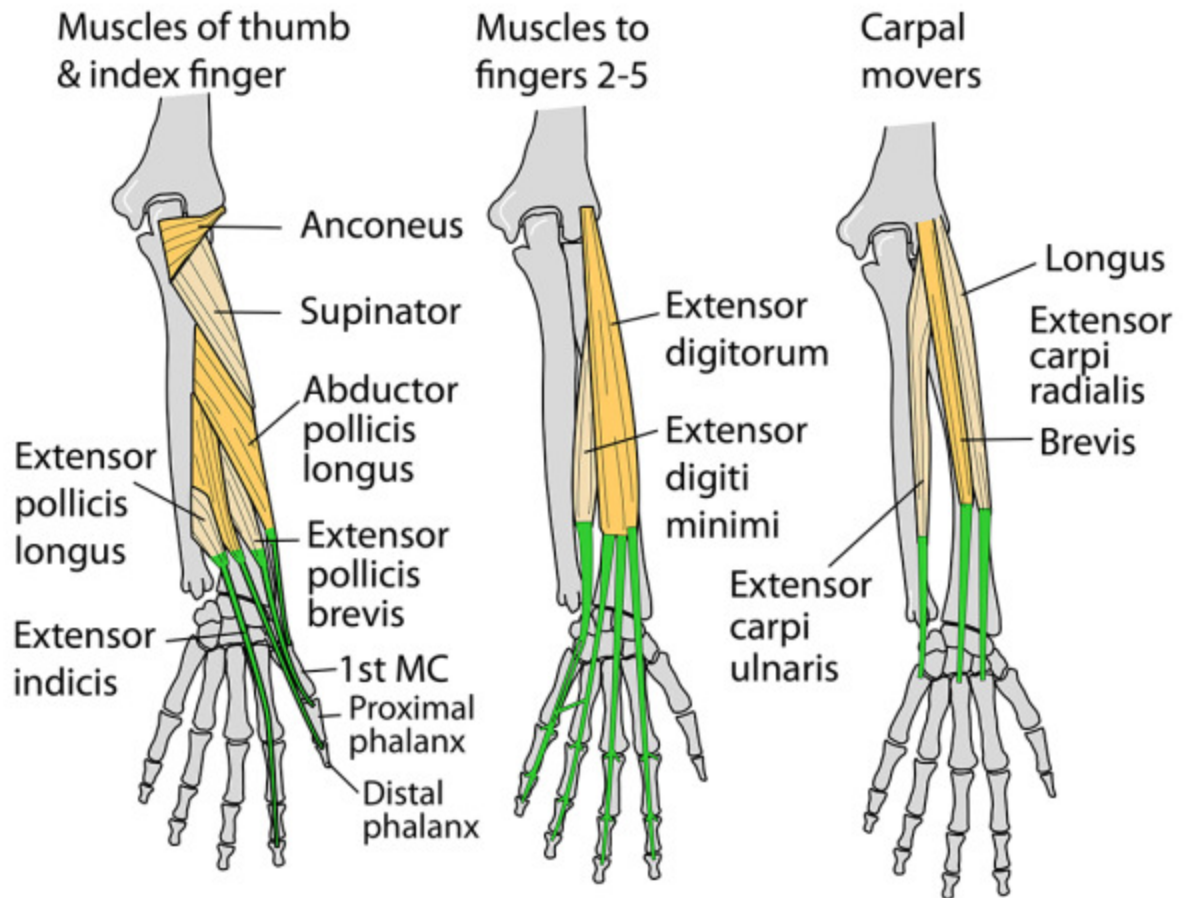


ECRL - Extensor carpi radialis longus
 ECRB - Extensor carpi radialis brevis

- Ribbon-like band
- Oblique
- 2.5cm wide
- Attached from radial styloid to pisiform & triquetral (NOT ulna)
- Fibrous septa to give 6 compartments



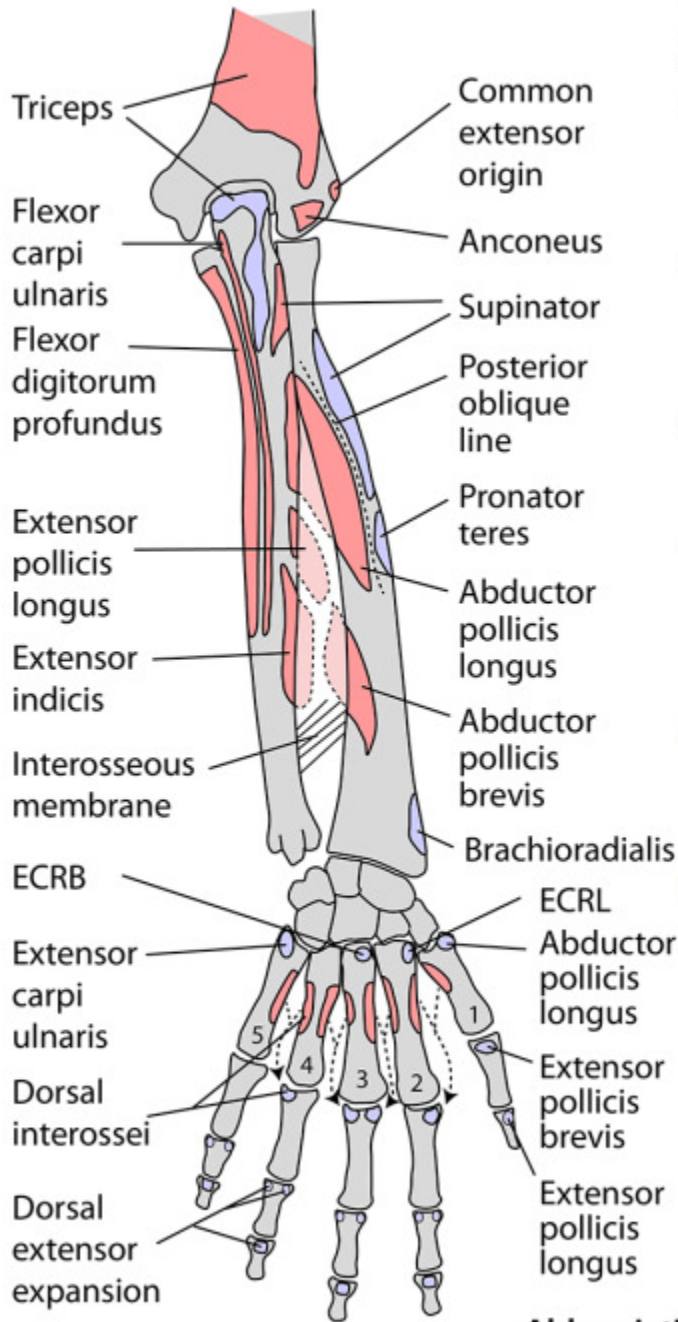
MUSCLES OF POSTERIOR FOREARM



Rules:

1. Long extensors attach to the base of proximal phalanx whilst long flexors do not. On the flexor side it is the interossei and lumbricals that attach here and this accounts for clawed hand when these small muscles fail.
2. All 4 deep muscles (see left hand drawing) all go to the index finger and thumb in a ratio of 1:3. The 3 muscles to the thumb attach in turn to 1st metacarpal (AbPL), the proximal phalanx (EPB) and the distal phalanx (EPL).
3. Of the 4 fingers (excluding the thumb), two fingers have an extra tendon over and above that from extensor digitorum. These are the index and little finger in the form of extensor indicis and extensor digiti minimi.

POSTERIOR FOREARM & HAND MUSCLE ATTACHMENTS



2nd metacarpal is longest
Middle finger is longest

Forearm extensors are divided into these groups:

Carpal movers:

- Extensor carpi ulnaris
- Extensor carpi radialis longus
- Extensor carpi radialis brevis

Finger movers:

- Extensor digitorum
- Extensor indicis
- Extensor digiti minimi

Thumb movers:

- 3 muscles/tendons of the snuff box

Thus the only fingers with an extra tendon, in addition to extensor digitorum, are index and little

All 4 muscles arising deep in the forearm go to thumb (3: EPL, APL, EPB) and index finger (1: Extensor indicis)

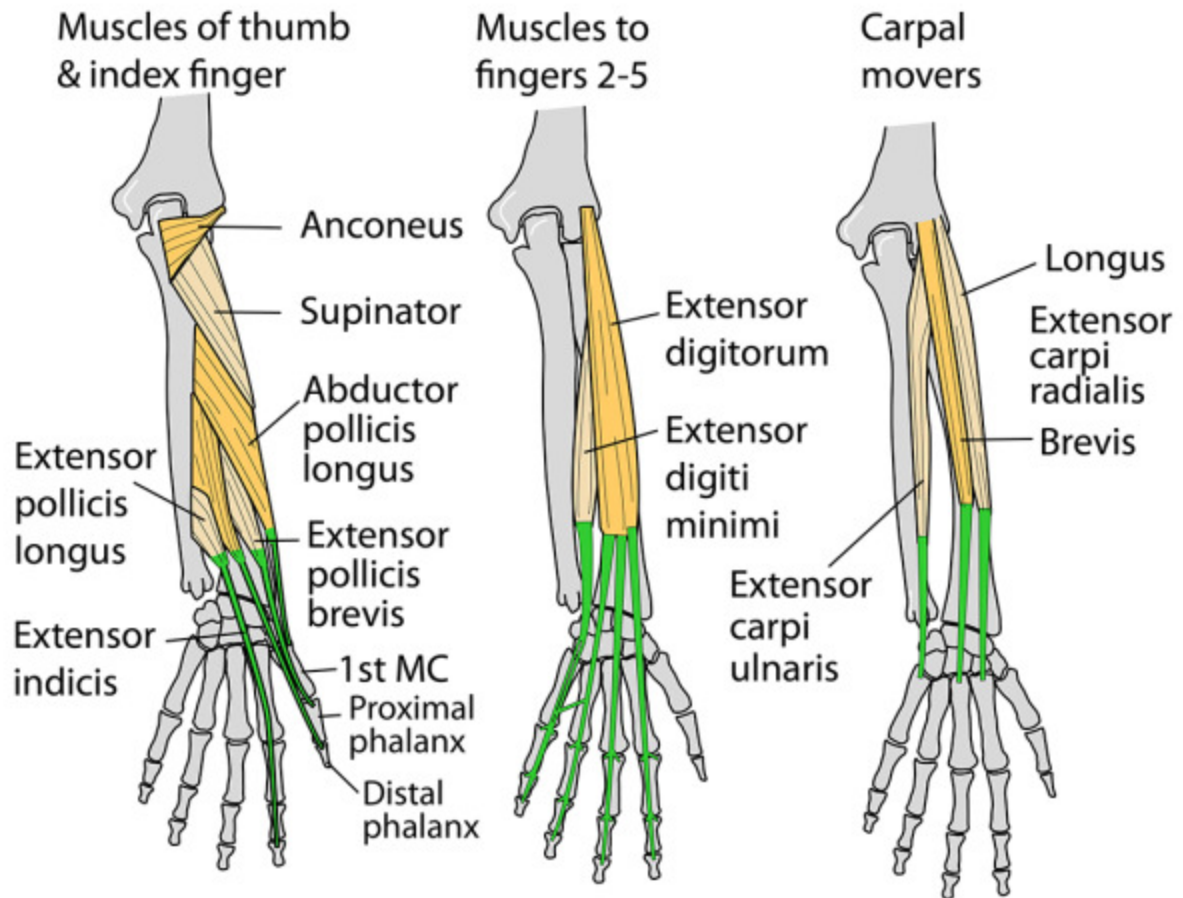
Note that muscles arising from the lateral epicondyle arise from its ANTERIOR and not its posterior surface

For details of attachments & action, see muscle section in the book - Instant Anatomy, by R H Whitaker & N R Borley. 4th edition. Wiley-Blackwell 2010

Abbreviations:

- ECRB- Extensor carpi radialis brevis
- ECRL- Extensor carpi radialis longus

MUSCLES OF POSTERIOR FOREARM



Rules:

1. Long extensors attach to the base of proximal phalanx whilst long flexors do not. On the flexor side it is the interossei and lumbricals that attach here and this accounts for clawed hand when these small muscles fail.
2. All 4 deep muscles (see left hand drawing) all go to the index finger and thumb in a ratio of 1:3. The 3 muscles to the thumb attach in turn to 1st metacarpal (AbPL), the proximal phalanx (EPB) and the distal phalanx (EPL).
3. Of the 4 fingers (excluding the thumb), two fingers have an extra tendon over and above that from extensor digitorum. These are the index and little finger in the form of extensor indicis and extensor digiti minimi.

SURFACE ANATOMY

